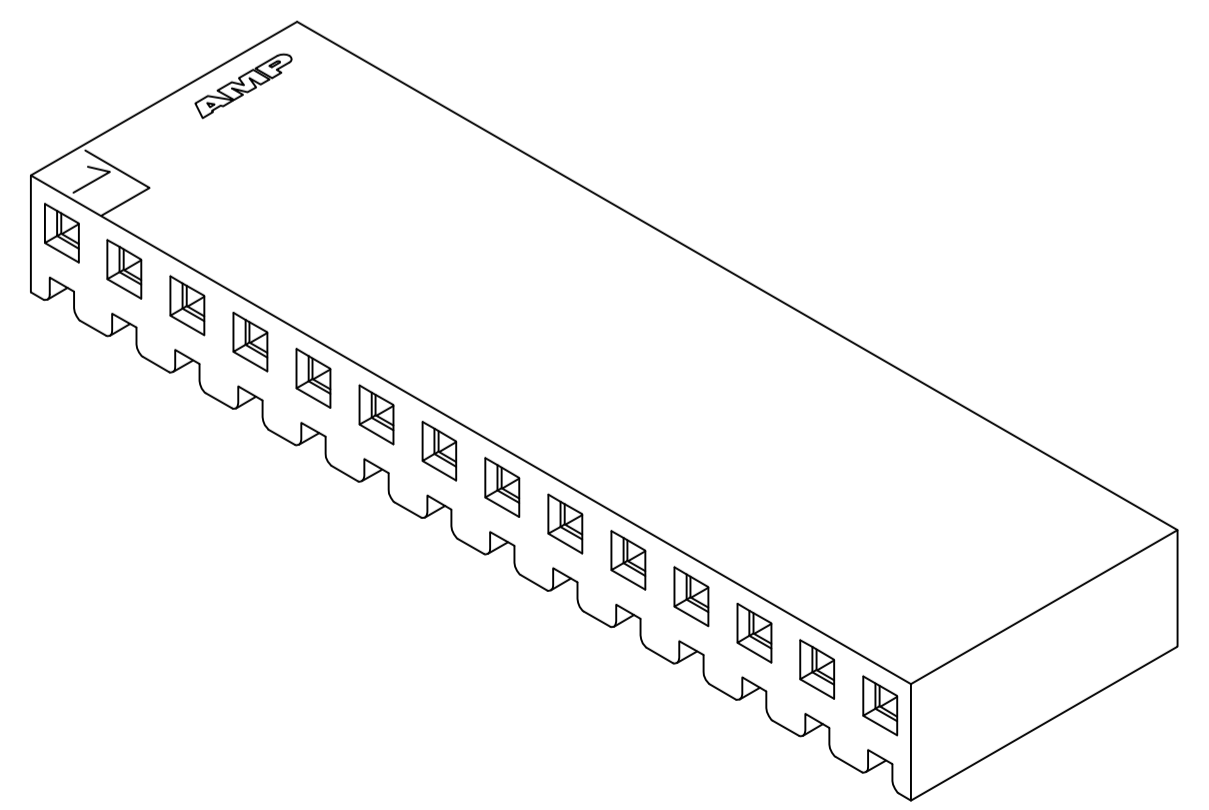
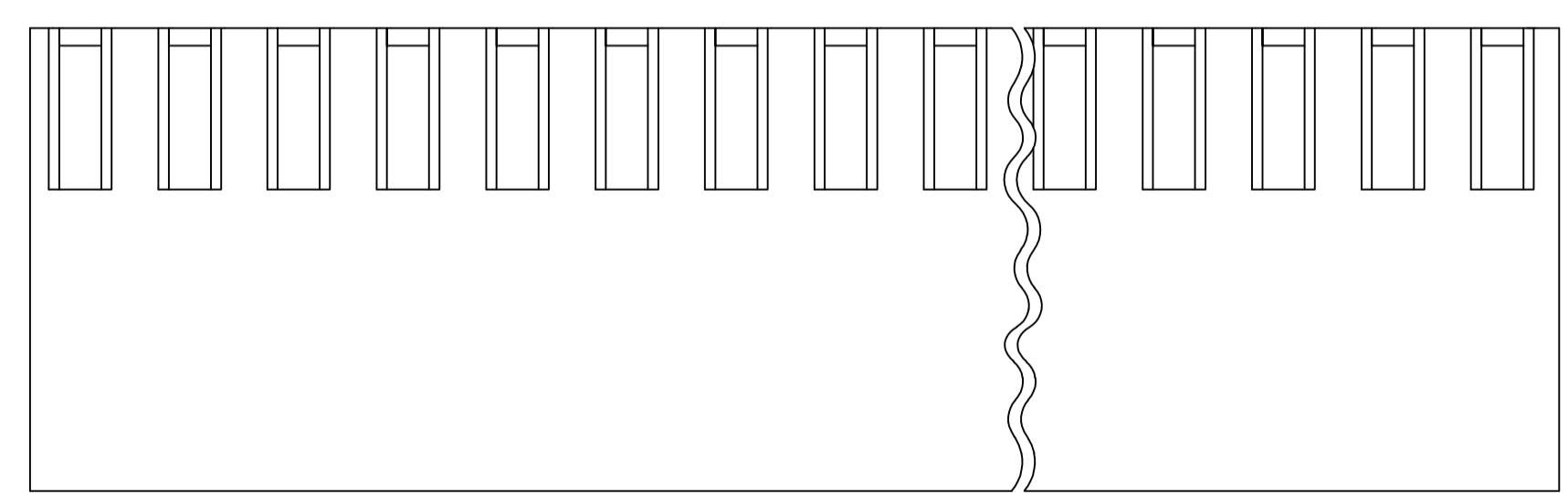
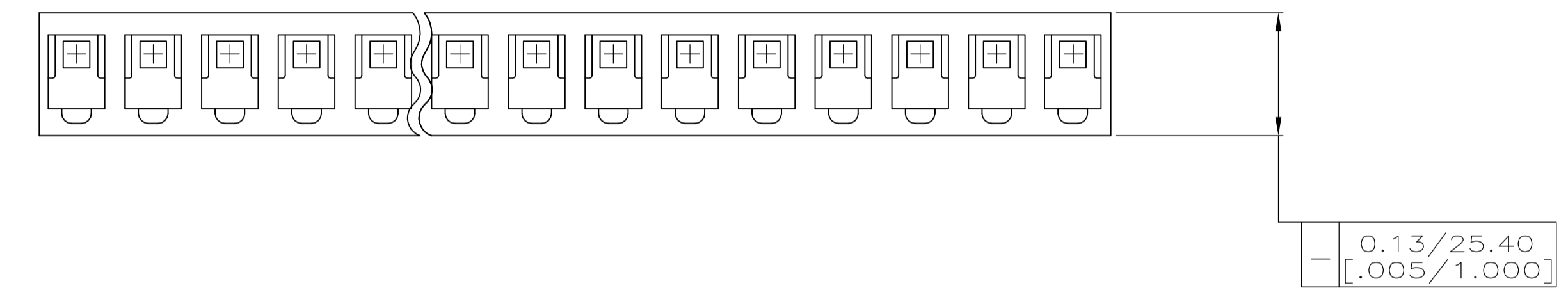
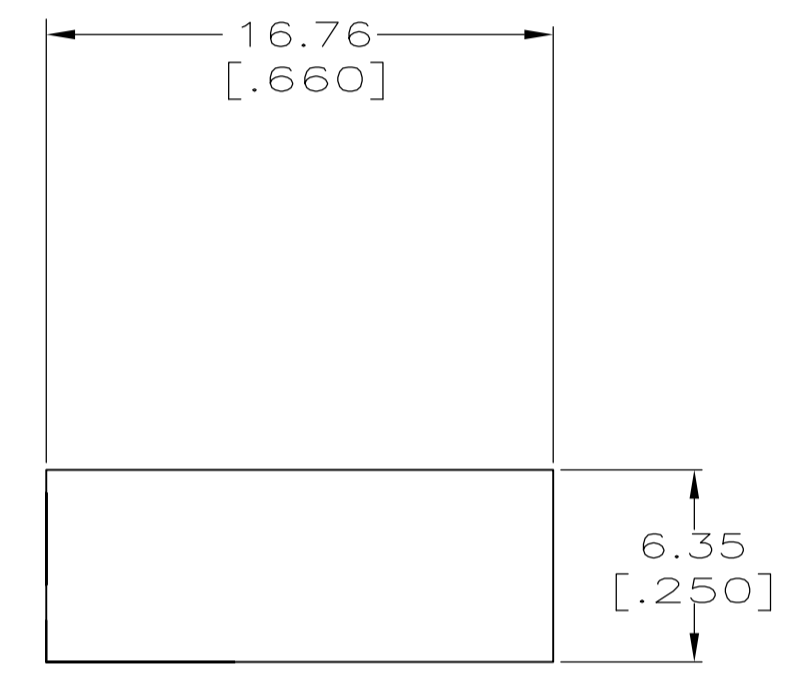
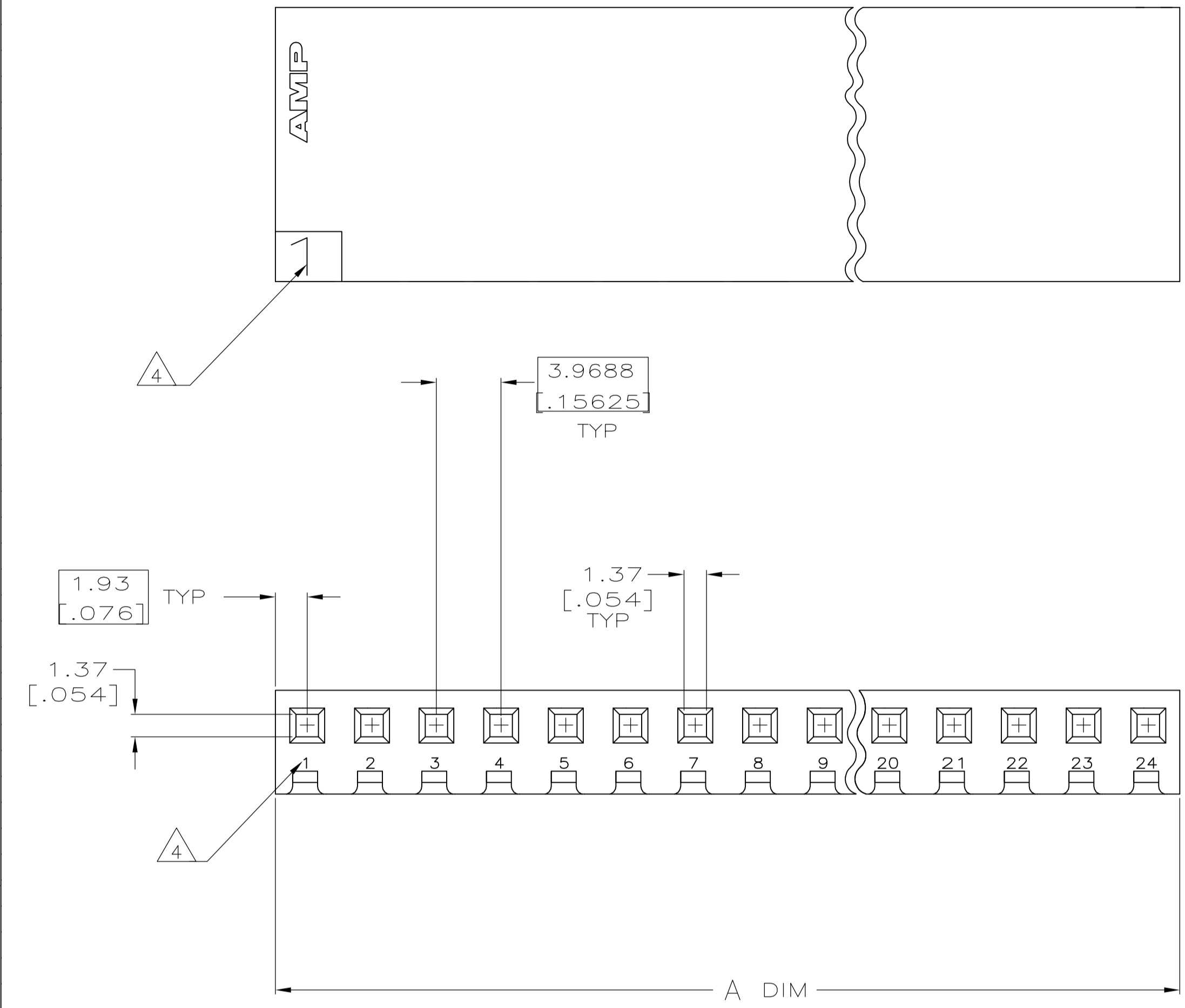


LOC		DIST		REVISIONS			
CM	54	REV	DATE	DESCRIPTION	DATE	BY	CHK
S		REVISED PER ECO-12-007807	27JUL12			KH	SM

- 1 UNIT ACCEPTS 1.14 [.045] SQUARE OR ROUND POST.
- 2 UNIT ACCEPTS STANDARD SL-156 CONTACTS.
- 3 UNIT ACCEPTS KEYING PLUG 640254-1 AND KEYING PIN 640255-1.
- 4 CIRCUIT I.D. NUMBER(S) TO BE LOCATED SEQUENTIALLY AS SHOWN OR ONLY NO. 1 CIRCUIT PLACED ON TOP OF HOUSING.
- 5 DIMENSIONS IN BRACKETS ARE IN INCHES.



3-DIMENSIONAL MODEL NTS

95.15	[3.746]	24	2-640251-4
91.19	[3.590]	23	2-640251-3
87.20	[3.433]	22	2-640251-2
83.24	[3.277]	21	2-640251-1
79.27	[3.121]	20	2-640251-0
75.31	[2.965]	19	1-640251-9
71.32	[2.808]	18	1-640251-8
67.36	[2.652]	17	1-640251-7
63.40	[2.496]	16	1-640251-6
59.44	[2.340]	15	1-640251-5
55.45	[2.183]	14	1-640251-4
51.49	[2.027]	13	1-640251-3
47.52	[1.871]	12	1-640251-2
43.56	[1.715]	11	1-640251-1
39.57	[1.558]	10	1-640251-0
35.61	[1.402]	9	640251-9
31.65	[1.246]	8	640251-8
27.69	[1.090]	7	640251-7
23.70	[.933]	6	640251-6
19.74	[.777]	5	640251-5
15.77	[.621]	4	640251-4
11.81	[.465]	3	640251-3
7.82	[.308]	2	640251-2
3.86	[.152]	1	640251-1
A #0.25 [.010]		NO. OF CIRCUITS	PART NO

THIS DRAWING IS A CONTROLLED DOCUMENT.		DIN B LEWIS 6-11-92		STE TE Connectivity	
DIMENSIONS: mm [INCHES]		CIRK R SWING 6-11-92		NAME HOUSING WITHOUT LOCKING RAMP, SL-156	
TOLERANCES UNLESS OTHERWISE SPECIFIED:		APVD E BEILES 7-15-92		PRODUCT SPEC	
0 PLC ± -		APPLICATION SPEC		SIZE CAGE CODE DRAWING NO	
1 PLC ± -		WEIGHT		A1 00779 C=640251	
2 PLC ± -		CUSTOMER DRAWING		SCALE 4:1 SHEET 1 OF 1 REV S	
3 PLC ± 0.13 [.005]					
4 PLC ± -					
ANGLES ± -					
MATERIAL NYLON,UL 94V-0 NATURAL		FINISH -			